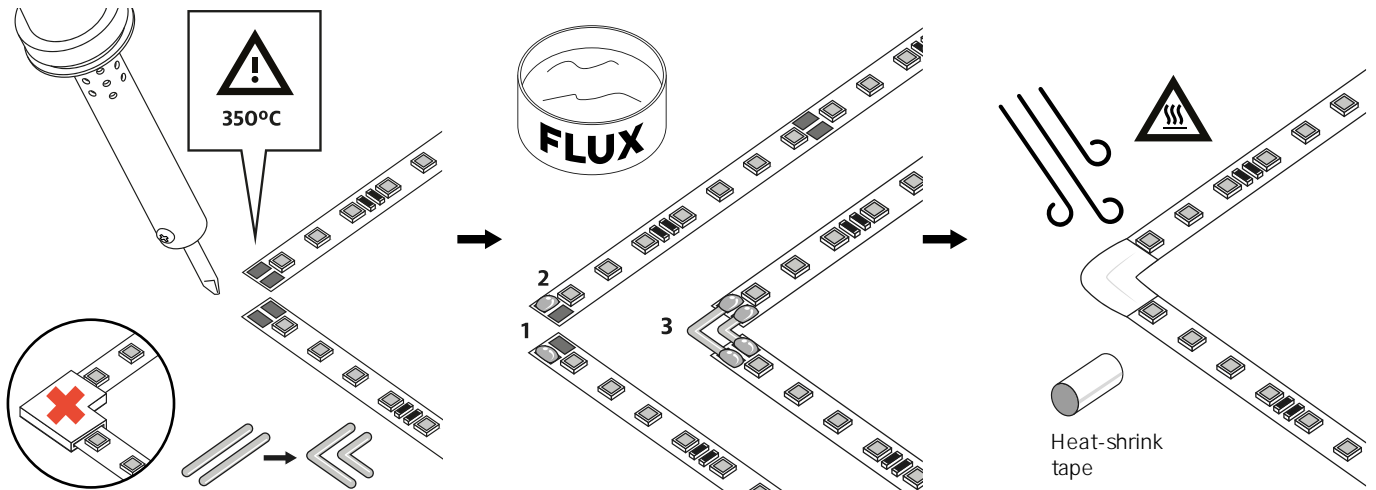






# INSTRUCTIONS

## 3. Corner welding

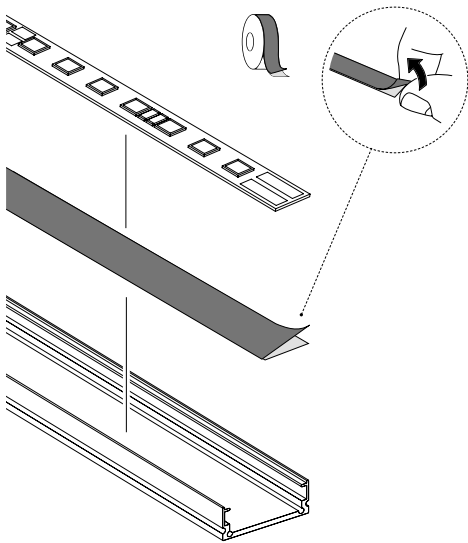


Do not use pressure brackets, use a rigid cable of 0.3 mm peeled and bent at 90°.

Apply solder to the pads and then solder the rigid wire. Dip the soldering iron in Flux paste.

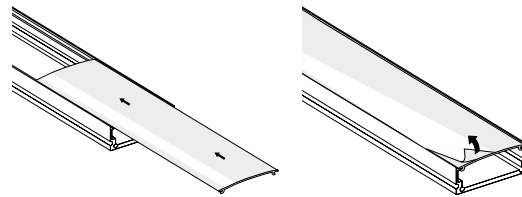
Use heat-shrink tape to insulate the connections.

## 4. Fixing on the Flex Cover profile



Place the module completely centered and flat on the profile using the adhesive.

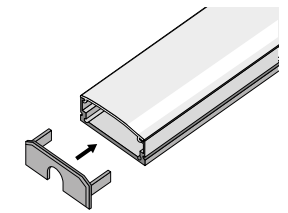
## 5. Protector



Insert the protector by sliding it along the profile.

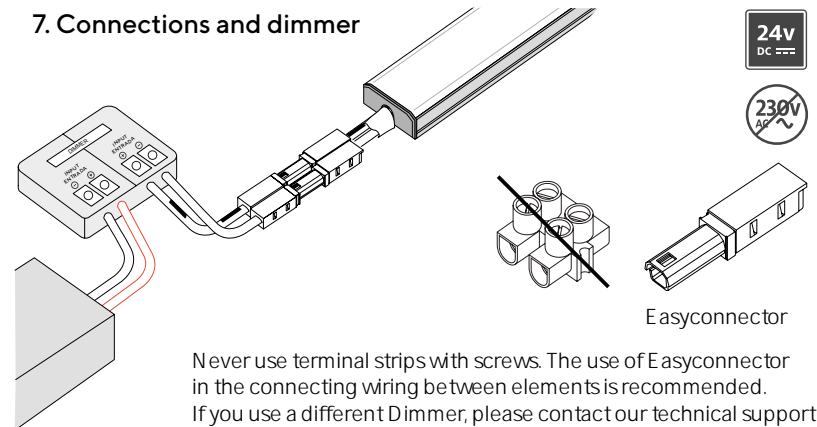
Remove the plastic cover of the protector.

## 6. Cover

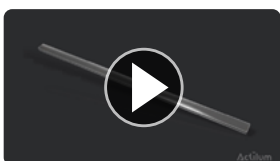


Close the set with covers.

## 7. Connections and dimmer

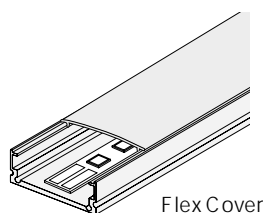


## Video demo

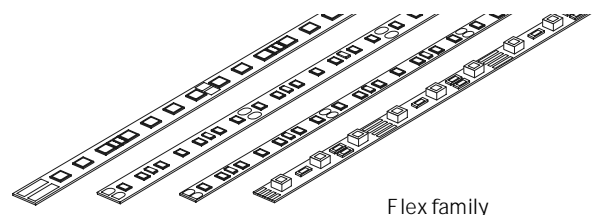


[vimeo.com/actilum/Line-Ledexpert](https://vimeo.com/actilum/Line-Ledexpert)

## Related products



Flex Cover



Flex family



All rights reserved. The information in this document is subject to change without notice.  
Manufactured in our installations in Barcelona, Spain.  
C / Josefina Vidal Folch 1-3, 08930 Barcelona (+34) 935 334 600 - [www.actilum.com](http://www.actilum.com)